



# MOTOTRBO™

## TWO-WAY RADIO SOLUTIONS AT A GLANCE



**BE SAFER,  
MORE EFFICIENT AND  
MORE PRODUCTIVE  
WITH THE POWERFUL DIGITAL  
PERFORMANCE AND ADVANCED  
CAPABILITIES OF MOTOTRBO.**



# DISCOVER WHAT MOTOTRBO CAN DO THROUGHOUT YOUR ENTERPRISE

Two-way radios are the go-to technology for enterprises around the world – connecting people wherever they need clear, instant and reliable communications. MOTOTRBO offers a portfolio of analog and digital two-way radios that enable voice and data communications. It combines the best of two-way radio functionality with the latest digital technology for instant communicating, easy decision-making and seamless coordinating.

MOTOTRBO brings all the benefits of push-to-talk communications in an incredibly powerful tool that takes productivity, efficiency and safety to a whole new level. MOTOTRBO is truly the next generation of business communications.



## HEAR AND BE HEARD CLEARLY IN NOISY ENVIRONMENTS

Superb audio quality on MOTOTRBO ensures crystal-clear communications. The Intelligent Audio feature automatically adjusts radio volume up and down in response to the level of noise in the workplace. And with MOTOTRBO's background noise suppression, you can be confident communication is loud and clear.

## REACH YOUR WORKFORCE WHEREVER THEY GO

Hear calls clearly over a greater range. MOTOTRBO digital voice delivers voice integrity and clarity to the limits of coverage plus twice the capacity of analog radios. Many more workers can use voice and data, without worrying about privacy or interference.

## KEEP COMMUNICATING FOR LONGER

Because MOTOTRBO radios use much less power in digital mode than analog, batteries last significantly longer on a single charge.

## CHOOSE THE RIGHT SOLUTIONS FOR THE RIGHT USERS

Whether you want ultra-light portables or extra-tough mobiles, integrated Bluetooth® or industry-leading data applications, MOTOTRBO has the right devices and systems to fit your workforce now, and allow you to evolve as your enterprise grows.

## MOVE FROM ANALOG TO DIGITAL WITH EASE

Migrate at your own pace, one talk group or department at a time. MOTOTRBO radios operate in analog and digital mode, so you can use them on your existing analog system and move to digital when you're ready – all while running operations smoothly.

## GET ADVANCED CAPABILITIES AND BUSINESS-CRITICAL FEATURES

MOTOTRBO has innovative features such as Transmit Interrupt, which lets you prioritize communication the moment it's needed. Man Down and Lone Worker applications call for help when personnel can't. GPS location tracking monitors vehicles, assets and the user in real time.

## LEVERAGE EXPERT APPLICATIONS THAT GET THE JOB DONE EFFICIENTLY

MOTOTRBO fits the way businesses run today, with an expert application developer program that helps you customize your communication solution to your environment and workforce. Solutions range from text messaging and GPS tracking to personnel accountability and work order ticket management. Applications like these make it easier to accomplish multiple tasks on a single device.

## KEEP CONNECTED WHEN CONDITIONS ARE TOUGHEST

MOTOTRBO is made to last. Our rugged, waterproof and intrinsically safe radios endure a rigorous Accelerated Life Testing (ALT) program which simulates up to 5 years of field use. We design and engineer MOTOTRBO products to survive the harsh conditions of everyday business.



# PORTABLE AND MOBILE RADIOS

The MOTOTRBO two-way radio portfolio offers you a wide choice of devices, from simple voice-only models to feature-rich voice and data radios. All work together seamlessly to deliver advanced features to enhance your safety, productivity and efficiency. With exceptional voice quality and outstanding usability, MOTOTRBO keeps your workforce connected.



## SL 7000 SERIES

### SLEEK AND SMART FOR THE BUSINESS LEADER WHO MUST LOOK PROFESSIONAL

Stay connected and in control with the incredibly thin, light portable that is the ultimate in discreet communications. Versatile and powerful, the SL Series weighs as little as an average smartphone. Its slim design and forward-thinking features such as Intelligent Audio, integrated Bluetooth and covert mode enhance your professionalism and responsiveness.

COMPATIBLE WITH:  IP SITE CONNECT  CAPACITY PLUS  LINKED CAPACITY PLUS  CONNECT PLUS



## XPR 7000 SERIES

### A COMMUNICATIONS POWERHOUSE FOR DEMANDING USERS

Experience voice and data communications like never before. The XPR 7000 Series offers a full set of features and rich functionality in one powerful device. It delivers superb audio quality, full color display, integrated Bluetooth for audio and data, enhanced GPS, text messaging and expert applications customized to your business. HazLoc versions are available for use in flammable or explosive atmospheres.

COMPATIBLE WITH:  IP SITE CONNECT  CAPACITY PLUS  LINKED CAPACITY PLUS  CONNECT PLUS



## XPR 3000 SERIES

### AFFORDABLE VOICE COMMUNICATIONS FOR THE BUSY PROFESSIONAL

Get superb audio in a scalable portable that lets you migrate to digital at your own pace. The XPR 3000 Series features Intelligent Audio and voice announcement for easy communication in challenging environments. With analog and digital capabilities and the ability to expand features with a simple software upgrade, you can transition to digital when you're ready.

COMPATIBLE WITH:  IP SITE CONNECT  CAPACITY PLUS  LINKED CAPACITY PLUS  CONNECT PLUS



## SL300

### ULTRA-PORTABILITY FOR THE USER WHO NEEDS EASY CONNECTIVITY

Discover freedom with this slim, lightweight radio, where advanced technology brings high performance with intuitive operation. For example, the eye-catching Active View display (optional) combines ruggedness and simplicity with long battery life. A versatile range of carry options allows you to stay connected and free to focus on the job at hand.

COMPATIBLE WITH:  IP SITE CONNECT  CAPACITY PLUS  LINKED CAPACITY PLUS  CONNECT PLUS



## CP200d

### SIMPLE VOICE COMMUNICATIONS FOR THE EVERYDAY USER WHO WANTS TO STAY CONNECTED

Connect your workforce efficiently and affordably and make the move to digital as your business grows. The CP200d two-way analog/digital radio provides great voice communication now, with the option to enable digital voice when you're ready. It features superior audio quality, outstanding coverage and long battery life.

COMPATIBLE WITH:  IP SITE CONNECT  CAPACITY PLUS  LINKED CAPACITY PLUS  CONNECT PLUS



## XPR 5000 SERIES

### A COMMUNICATIONS POWERHOUSE FOR DEMANDING USERS

Work smarter and safer with this high-performing digital mobile. The XPR 5000 Series offers a full set of features and rich functionality in one powerful device. It delivers superb audio quality, optional full color display, integrated Bluetooth for audio and data, enhanced GPS, text messaging and expert applications customized to your business.

COMPATIBLE WITH:  IP SITE CONNECT  CAPACITY PLUS  LINKED CAPACITY PLUS  CONNECT PLUS



## XPR 2500

### AFFORDABLE VOICE COMMUNICATIONS FOR THE BUSY PROFESSIONAL

The power of digital is within reach. The XPR 2500 features voice systems capability, twice the calling capacity and clearer voice communications. With Intelligent Audio, drivers don't need to adjust radio volume to avoid missing a call: the XPR 2500 monitors background noise and automatically adjusts itself.

COMPATIBLE WITH:  IP SITE CONNECT  CAPACITY PLUS  LINKED CAPACITY PLUS  CONNECT PLUS



## CM200d, CM300d

### SIMPLE VOICE COMMUNICATIONS FOR THE EVERYDAY USER WHO WANTS TO STAY CONNECTED

Make sure your drivers communicate without distraction. The CM200d and CM300d are cost-effective solutions that can be used by commercial motor vehicle (CMV) drivers easily and safely while they are operating their vehicles. They offer all the benefits of digital plus business-critical features, such as transmit-interrupt (decode only) to prioritize critical communication.

COMPATIBLE WITH:  IP SITE CONNECT  CAPACITY PLUS  LINKED CAPACITY PLUS  CONNECT PLUS



## CSA PORTABLE RADIOS (CANADA ONLY)

### SPECIALIZED PRODUCTS FOR HAZARDOUS LOCATIONS

The XPR 6580 I.S. and XPR 7550 I.S. are certified to Canada's CSA standard for use in locations where flammable or explosive gas, vapor or dust may be present. They have a comprehensive feature set, and are color-coded for easy identification. The radios are available with a dedicated portfolio of CSA-rated accessories.

# SYSTEMS

No matter how large or small your enterprise, MOTOTRBO offers a wide range of systems specifically designed for your business – for the days ahead and the years beyond. You get the best of two-way radio with digital technology and enjoy integrated voice and data communication, increased capacity, enhanced features and exceptional voice quality, across the city and around the globe.

---



## CONVENTIONAL BASELINE SINGLE SITE COVERAGE AND CAPACITY

A conventional system is a step up from basic radio-to-radio communications. Radios communicate via a high-power repeater, giving better coverage and more centralized control.

---



## IP SITE CONNECT COST-EFFECTIVE COVERAGE FOR MULTIPLE SITES

Use your IP network to extend the voice and data capabilities of MOTOTRBO by linking repeaters together. You can create a continuous network that covers employees at 15 geographically-dispersed locations. You can also link up to 15 repeaters to create wide area coverage or enhance coverage at a single site that has physical barriers.

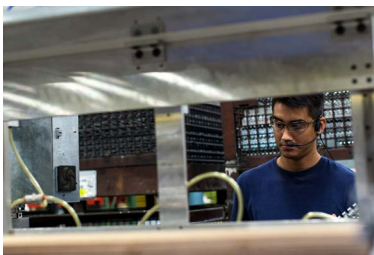
---



## CAPACITY PLUS COST-EFFECTIVE CAPACITY FOR A SINGLE SITE

Opt for this single site, digital, entry-level trunking system that maximizes the capacity of MOTOTRBO by connecting several repeaters together. You can use it for a high volume of voice and data communication and link over a thousand users at a single site.

---



## LINKED CAPACITY PLUS COVERAGE AND CAPACITY FOR MULTIPLE SITES

Expand the capacity and extend the coverage of MOTOTRBO with this multi-site, digital, entry-level trunking system. It leverages the high capacity of Capacity Plus with the wide area coverage capabilities of IP Site Connect to keep employees at many locations affordably connected.

---



## CONNECT PLUS MULTI-SITE COVERAGE, CAPACITY AND CONTROL

Unify your entire enterprise with this scalable, multi-site digital trunking system that coordinates resources using a dedicated control channel. Calls can be queued during busy times until an open channel is available, important users can be assigned priority status and a wireline console can be used for centralized dispatch.

---

# INFRASTRUCTURE

Repeaters, controllers and gateways are the backbone of your MOTOTRBO two-way radio system. They ensure your radio network is available at all times and that communications are clear, reliable and secure across your enterprise.



## SLR 5000 SERIES REPEATER

A second generation DMR repeater, the SLR 5000 Series offers high performance, high efficiency and a design for the future. The product has a 50 W continuous duty output and high sensitivity for optimum coverage, and high reliability and low power consumption for low cost of ownership. With a slim, modular design, the product is easy to install and service, enhanced by thoughtful touches like a built-in battery charger and multi-purpose mounting brackets. To protect your investment, it is designed with enough headroom and expandability to allow future evolution.



## XPR 8000 SERIES REPEATERS

Maximize the performance of your MOTOTRBO system with the 40 W XPR 8000 Series repeaters. They utilize dynamic mixed mode capability to ease migration by automatically switching between analog and digital mode. The XPR 8000 Series supports two simultaneous voice or data paths in digital mode, doubling capacity without adding new frequencies.



## MTR3000 HIGH POWER REPEATER

Extend coverage and capacity easily with the MTR3000. This 100 W continuous duty base station/repeater operates in digital mode in MOTOTRBO Conventional, IP Site Connect, Capacity Plus, Linked Capacity Plus and Connect Plus systems. The MTR3000 can also operate in analog mode for conventional systems.



## CONNECT PLUS XRC 9100 CONTROLLER

Deliver greater coverage and information to mobile teams. The XRC 9100 supports single and multi-site Connect Plus systems. Queue calls during busy times until an open channel is available and assign important users priority status when the system is in high demand. The XRC 9100 represents an evolution of the original XRC 9000 MOTOTRBO Connect Plus Controller, and is fully interoperable with new and existing systems.



## CONNECT PLUS XRT 9100 GATEWAY

Reach your large workforce efficiently. The XRT 9100 links Connect Plus with an IP-based wire-line console for centralized dispatch. The XRT 9100 represents an evolution of the original XRT 9000 MOTOTRBO Connect Plus Gateway, and is fully interoperable with new and existing systems.



## CONNECT PLUS XRI 9100 INTERCONNECT GATEWAY

With the MOTOTRBO Connect Plus Telephone Interconnect feature, you can connect your staff to people inside and outside your business, on their fixed or cellular phones. Handle customer queries direct, and manage inter-company transactions seamlessly. The MOTOTRBO Connect Plus XRI 9100 Interconnect Gateway improves your efficiency and responsiveness.



## WAVE SERVER

Get robust and secure management of your client accounts. The WAVE Server provides the interface between public cellular networks and the MOTOTRBO radio network for secure centralized provisioning, flexible client management, call history, upgrades and diagnostics.

# CONSOLES & SYSTEM MANAGEMENT

With options designed for your business, this portfolio of dispatch consoles and system management applications has the features you need to make quick decisions, mobilize a fleet and keep teams informed.



## MIP 5000

When you need to keep your staff connected with clear, effective and affordable voice communication, you can rely on the MIP 5000 VoIP Radio Console. This powerful radio-over-IP dispatch console utilizes control stations to access up to 24 channels via a flexible Windows GUI. Dispatch terminals can be connected over any IP network, allowing you to supplement traditional stationary desktop PCs with mobile laptop dispatcher positions.



 **SOLD AND SUPPORTED**

## AVTEC SCOUT

Scout is a true VoIP console system: all its components may be distributed over a LAN/WAN using standard Ethernet connections. The system uses a wireline interface to connect with MOTOTRBO systems, for increased functionality, call capacity and system reliability.

Scout provides a dedicated media workstation. This allows customers to operate on standard hardware for reduced costs. Radio, Telephony, and I/O integration are supported.



 **SOLD AND SUPPORTED**

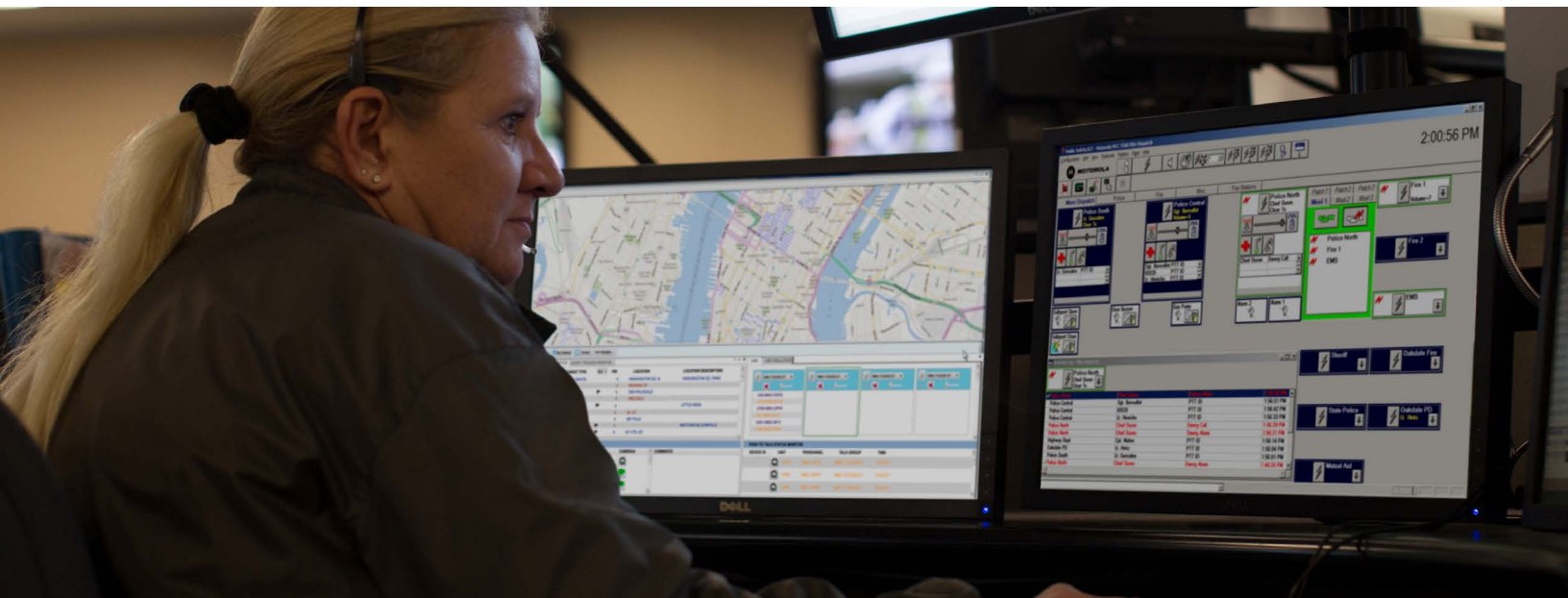
## GENESIS GW3-TRBO

GW3-TRBO® represents the ultimate in system management for MOTOTRBO. With GW3-TRBO, you have an easy way to generate detailed metrics of your MOTOTRBO system performance.

GW3-TRBO connects directly to the MOTOTRBO system through a wireline interface. It captures usage information for every site, channel, slot, talkgroup and subscriber.

 **SOLD AND SUPPORTED**

Products bearing the "Motorola Solutions Sold and Supported" logo are premium products developed by Motorola Solutions partners to fulfill critical functions in MOTOTRBO™ systems. These products are tested and integrated in direct cooperation with Motorola. They are sold through Motorola Channel Partners and supported through Motorola's customer service teams.





# RADIO ACCESSORIES

From discreet Bluetooth earpieces to efficient battery solutions, our complete portfolio of accessories optimizes the performance of your MOTOTRBO radio. They are designed to help you perform your best, wherever you work, and unleash the power of the industry's most advanced digital radio platform.



## EARPIECES

Transmit and receive discreetly with a variety of earpieces that feature a streamlined design and rugged cables that withstand tough conditions. With inline push-to-talk and microphones, they're easy to use on the go. Our flexible array of surveillance kits includes two-wire kits (one wire for receiving, one wire for transmitting) and more discreet three-wire kits (separate wires for transmitting, receiving and push-to-talk).



## HEADSETS

Protect hearing and facilitate communications in noisy environments. Select from a wide range of comfortable, durable, lightweight to heavy duty headsets with noise-cancelling boom microphones and in-line push-to-talk.



## BLUETOOTH® WIRELESS FOR PORTABLE AND MOBILE RADIOS

Unleash the power of your MOTOTRBO radio without wires getting in the way. Our extensive suite of Bluetooth accessories free you to take the radio off your belt, leave your truck or step away from your desk (up to 30 feet away) and stay connected. Choose from a variety of earpieces, heavy duty wireless headsets and push-to-talk solutions that let you move without constraints around the workplace.



## BATTERIES AND CHARGERS

MOTOTRBO batteries are developed, tested and certified for optimal performance with your MOTOTRBO radios and they outperform other brands of batteries. IMPRES batteries can be charged 150 additional times versus a standard battery – a 43% increase in charge cycles. IMPRES Over the Air Battery Management automatically collects battery information over the air while radios are in use, making battery management easier than ever.



## REMOTE SPEAKER MICROPHONES

Communicate clearly in loud workplaces. MOTOTRBO remote speaker microphones (RSM) have exclusive audio features for windy outdoor environments (windporting) and noisy environments (noise-canceling). IMPRES audio ensures your voice is heard clearer and louder regardless of how you speak. The INC RSM suppresses extreme noise (high decibel equipment, heavy machinery) so you can be heard above all.



## MOBILE RADIO MICROPHONES

Choose microphones designed to keep workers safely connected on the move. Keypad microphones let you easily navigate menus on your radios, dial phone numbers and send text messages. The Long Range Wireless Remote Speaker Microphone (RSM) allows you to stay in touch even on remote job sites when you depend on your mobile radio but have to work outside your vehicle. It pairs instantly to the mobile microphone with Bluetooth gateway.



## CARRY SOLUTIONS

Carrying cases are available in sizes designed to fit your radio and battery and permit audio to be heard clearly. Our carry accessories keep your hands free, so you can concentrate on the task at hand. Choose from a wide range of nylon cases, leather cases, straps, holsters and clips, all designed to keep your radio protected, yet still easy to access.



## INSTALLATION AND MOUNTING KITS

Mounting kits give you the flexibility to mount the radio under or in your dashboard, between seats or on the floor. Remote mount kits allow you to mount the radio in the truck when dash space is limited.

# MOTOTRBO APPLICATIONS

With a wide range of applications and an expert application partners program, MOTOTRBO offers custom solutions that truly meet your business needs. Business-specific applications like these increase the level of efficiency, safety and productivity throughout your enterprise.



## COMMAND AND CONTROL

These applications work behind the scenes of your MOTOTRBO network to enhance the efficiency and responsiveness of your system. Interfacing to a Work Order Ticketing system, managing alarms and telemetry, and connecting to other messaging systems, they bring significant benefits to your business.



## TEXT MESSAGING AND EMAIL

Enhance productivity by connecting your radio network with your text and email system. Allow your staff to use advanced work order ticketing solutions, or simply streamline the flow of information between office and shop floor.



## PERSONNEL SAFETY

Increase the safety and accountability of your staff by deploying these applications. Features such as Man Down and Lone Worker can be linked to indoor and outdoor location services for maximum effectiveness.



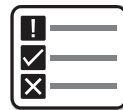
## VOICE DISPATCH

Giving you centralized control of your workforce, these applications offer customizable user interfaces to allow your dispatcher to coordinate your staff efficiently and effectively. They also enhance business connectivity by allowing telephony interconnections and multi-system patching.



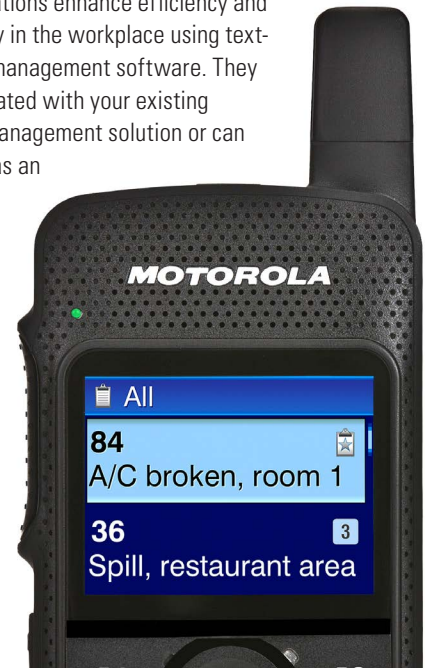
## INTEROPERABILITY

Connect your MOTOTRBO radio system to other communication systems. From analog two-way radio systems to SIP telephone networks to cellular providers, you can increase efficiency and increase collaboration.



## WORK TICKET MANAGEMENT

These applications enhance efficiency and accountability in the workplace using text-based issue management software. They can be integrated with your existing work-order management solution or can be operated as an independent system.



## LOCATION

Track your vehicles and your staff for improved safety, security and accountability. These applications allow you to make the most of MOTOTRBO's GPS capabilities, and some even offer indoor location tracking capabilities.



## SYSTEM MONITORING

To get the best from your MOTOTRBO system, you need to know how it's performing. These applications give you a dashboard view of key metrics and parameters, with detailed logs helping you plan future growth and upgrades.

# WAVE™ WORK GROUP COMMUNICATIONS

With wireline integration to MOTOTRBO Connect Plus, Capacity Plus and Linked Capacity Plus systems, WAVE Work Group Communications lets your mobile and office workers connect with simple, secure and affordable broadband push-to-talk (PTT), wherever they are.

## WAVE 3000

### EXTEND MOTOTRBO TO SMARTPHONES AND TABLETS

WAVE 3000 delivers instant and secure broadband PTT communications for small to medium businesses. Whether you're communicating with MOTOTRBO radio users or with other smartphone users, WAVE 3000 makes it simple and affordable. WAVE 3000 can be integrated with your MOTOTRBO Connect Plus, Capacity Plus and Linked Capacity Plus systems, but can also be used as a standalone broadband PTT solution where radios are not required.

### TURN YOUR APPLE OR ANDROID DEVICE INTO A MULTI-CHANNEL PTT HANDSET

Not everyone needs or wants to carry a radio handset. But they do want instant, secure access to important communications wherever they are. With a WAVE Mobile Communicator installed on a smartphone, tablet or custom handheld, any user can access MOTOTRBO communications from any location, talking with groups of other users or individuals as required.

## WAVE 5000

### INTEGRATE MOTOTRBO WITH ENTERPRISE IT AND EXTEND TO PCS, TELEPHONY, SMARTPHONES AND TABLETS

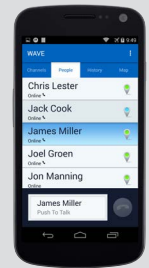
WAVE 5000 enables highly scalable, feature rich, enterprise grade PTT on broadband networks and devices so that critical, time-sensitive information flows quickly and securely between mobile workers, teams and citizens.

From two-way radios to smartphones, laptops to landlines, tablets to rugged handhelds, WAVE 5000 lets your users use the devices they already have and the networks they already subscribe to connect and talk to others both inside and outside of your communications environment. Wireline or donor radio integrations with MOTOTRBO ensure system scalability and deployment flexibility.

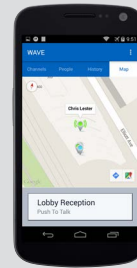
## WAVE MOBILE COMMUNICATOR FOR WAVE 3000 AND WAVE 5000



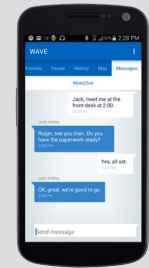
Group Call



Private Call



Mapping



Group Text

## WAVE COMMUNICATORS

### ENABLE YOUR WORKFORCE TO CONNECT AND COLLABORATE

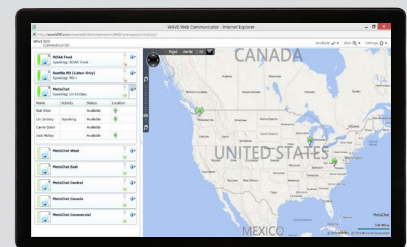
Whatever the device or available network, WAVE has client applications that meet the needs of all types of users. Called WAVE Communicators, these applications provide the user interface to a WAVE communications system.



Define and manage your MOTOTRBO communications environment with WAVE Advanced Desktop Communicator.



Give authorized PC users controlled access to MOTOTRBO communications channels with the WAVE Desktop Communicator.



With WAVE Web Communicator you can use a web browser to access your MOTOTRBO radio channels.

# SERVICES

Ensure and maintain the robust performance of your MOTOTRBO radios with a complete suite of services. We've got you covered, from pre-installation to post-implementation, with expert support to make sure your business runs without interruption, disruption or unplanned downtime.

PLAN



## RF COVERAGE MAP GENERATION

Predict RF coverage when designing and deploying MOTOTRBO systems.

DEPLOY



## IP NETWORKING

Validate and optimize IP networking and site connectivity.

SUPPORT



## SERVICE FROM THE START (SFS)

Enhanced level of coverage that goes beyond standard warranty – from the first day of your radio purchase.



## INFRASTRUCTURE REPAIR

Keep your communication networks operating at their best and available at all times.



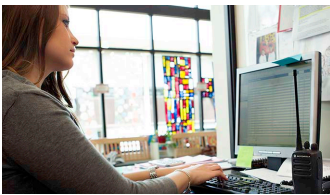
## NETWORK MONITORING

Real-time monitoring, diagnostics and fault resolution for your network from a central operations center.



# FLEET MANAGEMENT

To help you manage your radios and your staff more efficiently, MOTOTRBO offers tools and applications for fleet management.



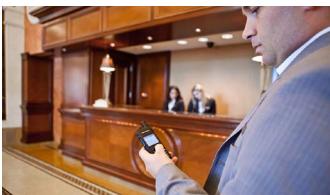
## CUSTOMER PROGRAMMING SOFTWARE

The MOTOTRBO Customer Programming Software (CPS) provides complete access to the configuration of your radio. Update firmware, enable features, change talkgroups, add language packs and upload voice announcements to your radio from your desktop.



## RADIO MANAGEMENT

As an add-on to the CPS software, Radio Management gives you the capability to program radios in batches to standardized templates. Reduce errors, organize large fleets more efficiently, and streamline large-scale updates.



## OVER-THE-AIR PROGRAMMING

Over-the-Air Programming (OTAP) allows you to update radios remotely, using the data capabilities of your MOTOTRBO system. Updates can be scheduled to minimize disruption to your business-critical communications.



## RFID FLEET MANAGEMENT

Install RFID tag-equipped volume knobs on your portable radios, for easy inventory management of your radios. You can use an RFID reader to check radios in and out quickly and efficiently, or to increase staff accountability.



## IMPRES BATTERY MANAGEMENT

You can't afford to be let down by worn-out radio batteries. IMPRES battery management allows you to see at a glance the health of your batteries, so you know exactly how much charge they are holding, and when they need replacement. Over the Air Battery Management automatically keeps track of battery health even while the radios are in use.



## FLEET MANAGEMENT APPLICATIONS

The MOTOTRBO Application Development Program offers select third party applications to help you manage your fleet. Use GPS location tracking to monitor vehicles and manage logistics. Determine the speed and location of vehicles and monitor driving characteristics, fuel consumption and ignition status.

# MOTOTRBO PORTABLE RADIO FEATURES



FEATURE	DESCRIPTION	XPR 3000 SERIES				XPR 7000 SERIES					SL SERIES		
		SL300	CP200d	XPR 3300	XPR 3500	XPR 7350	XPR 7380	XPR 7550	XPR 7580	XPR 7550 IS	SL7550	SL7560	SL7590
<b>FREQUENCY BAND</b>	Capable of operation in the following bands	UHF, VHF	UHF, VHF	UHF, VHF	UHF, VHF	UHF, VHF	800, 900	UHF, VHF	800, 900	UHF, VHF	UHF	800	900
<b>CHANNELS</b>	Programmable channel capacity	2, 99	16	16	128	32	32	1000	1000	1000	1000	1000	1000
<b>IP RATING</b>	Rated sealing for dust and water ingression	IP54	IP54	IP55	IP55	IP57	IP57	IP57	IP57	IP67	IP54	IP54	IP54
<b>DIGITAL</b>	DMR standard digital voice communications	•	○	•	•	•	•	•	•	•	•	•	•
<b>ANALOG</b>	Analog voice communications	•	•	•	•	•	•	•	•	•			
<b>BASIC PRIVACY</b>	Basic protection against casual eavesdropping	•	•	•	•	•	•	•	•	•	•	•	•
<b>BLUETOOTH AUDIO</b>	Wireless connection for earpieces and headsets					•	•	•	•		•	•	•
<b>BLUETOOTH DATA</b>	Wireless connection for data communications					○	○	○	○		○	○	○
<b>DISPLAY</b>	Visual readout of radio functions	○			•			•	•	•	•	•	•
<b>EMERGENCY CALL</b>	Radio can initiate Digital Emergency process	•		•	•	•	•	•	•	•	•	•	•
<b>ENHANCED PRIVACY</b>	Encryption of voice traffic using ARC4 with 40bit keys			○	○	•	•	•	•	•	•	•	•
<b>GPS</b>	Embedded GPS receiver for location monitoring					•	•	•	•	•			
<b>HAZLOC</b>	Radio is designed for use in flammable atmospheres					○	○	○	○	•			
<b>IMPRES™ ENERGY</b>	Radio supports IMPRES smart battery technology			•	•	•	•	•	•	•			
<b>IMPRES OVER-THE-AIR</b>	Radio supports IMPRES Over The Air Battery Management			•	•	•	•	•	•	•			
<b>INTELLIGENT AUDIO</b>	Automatic volume control based on background noise levels			•	•	•	•	•	•	•	•	•	•
<b>KEYPAD</b>	Full (F) or limited (L) keypad for control and data entry				L			F	F	F	F	F	F
<b>LONE WORKER</b>	Initiates emergency if user does not respond to periodic alerts	•		•	•	•	•	•	•	•	•	•	•
<b>MAN DOWN</b>	Initiates emergency based on radio orientation or movement					○	○	○	○	○			
<b>OTAP</b>	Radio can be programmed Over-The-Air			•	•	•	•	•	•	•	•	•	•
<b>RADIO DISABLE/ENABLE</b>	Radio can remotely disable and/or re-enable another radio							•	•	•	•	•	•
<b>REMOTE MONITOR</b>	Radio can remotely activate another radio's microphone				•			•	•	•	•	•	•
<b>TEXT MESSAGING</b>	Radio can send and/or receive text messages					•	•	•	•	•	•	•	•
<b>TEXT TO SPEECH</b>	Radio can read text and settings out loud					•	•	•	•	•	•	•	•
<b>THIRD PARTY APPLICATIONS</b>	Radio can use data to support third party applications					•	•	•	•	•	•	•	•
<b>TRANSMIT INTERRUPT</b>	Radio can force another radio to stop transmitting			○	○	•	•	•	•	•	•	•	•
<b>USER-SELECTABLE AUDIO PROFILES</b>	Radio's sound can be customized by user			•	•	•	•	•	•	•	•	•	•
<b>VIBRATE</b>	Silent alert of incoming calls and texts										•	•	•
<b>VOICE ANNOUNCEMENT</b>	Audible confirmation of selected operations of the radio	•	•	•	•	•	•	•	•	•	•	•	•
<b>DIRECT MODE</b>	Radio is capable of direct radio-to-radio operation	•	•	•	•	•	•	•	•	•	•	•	•
<b>CONVENTIONAL</b>	Radio is compatible with basic repeater system	•	•	•	•	•	•	•	•	•	•	•	•
<b>IP SITE CONNECT</b>	Radio is compatible with IP Site Connect systems			○	○	•	•	•	•	•	•	•	•
<b>CAPACITY PLUS</b>	Radio is compatible with Capacity Plus systems			○	○	•	•	•	•	•	•	•	•
<b>LINKED CAPACITY PLUS</b>	Radio is compatible with Linked Capacity Plus systems			○	○	•	•	•	•	•	•	•	•
<b>CONNECT PLUS</b>	Radio is compatible with Connect Plus trunked systems					•	•	•	•	•	•	•	•

○ OPTIONAL (Extra Cost) • STANDARD



# MOTOTRBO MOBILE RADIO FEATURES

FEATURE	DESCRIPTION	CM SERIES		XPR 5000 SERIES				
		CM200d	CM300d	XPR 2500	XPR 5350	XPR 5380	XPR 5550	XPR 5580
<b>FREQUENCY BAND</b>	Capable of operation in the following bands	VHF, UHF	VHF, UHF	VHF, UHF	VHF, UHF	800, 900	VHF, UHF	800, 900
<b>CHANNELS</b>	Programmable channel capacity	16	99	128	32	32	1000	1000
<b>IP RATING</b>	Rated sealing for dust and water ingress	IP54	IP54	IP54	IP54	IP54	IP54	IP54
<b>DIGITAL</b>	DMR standard digital voice communications	○	○	●	●	●	●	●
<b>ANALOG</b>	Analog voice communications	●	●	●	●	●	●	●
<b>ALPHANUMERIC DISPLAY</b>	Display for easy access to advanced features		●	●			●	●
<b>BASIC PRIVACY</b>	Basic protection against casual eavesdropping	●	●	●	●	●	●	●
<b>BLUETOOTH AUDIO</b>	Wireless connection for earpieces and headsets				●	●	●	●
<b>BLUETOOTH DATA</b>	Wireless connection for data communications				○	○	○	○
<b>CONTROL STATION</b>	Radio can be configured as a Dispatch or Control Station	●	●	●	●	●	●	●
<b>EMERGENCY CALL</b>	Radio can initiate Digital Emergency process			●	●	●	●	●
<b>ENHANCED PRIVACY</b>	Encryption of voice traffic using ARC4 with 40bit keys			○	●	●	●	●
<b>GPS</b>	Embedded GPS receiver for location monitoring				●	●	●	●
<b>INTELLIGENT AUDIO</b>	Automatic volume control based on background noise levels			●	●	●	●	●
<b>LONE WORKER</b>	Initiates emergency if user does not respond to periodic alerts			●	●	●	●	●
<b>NUMERIC DISPLAY</b>	Clear display of channel number on front of radio	●			●	●		
<b>OTAP</b>	Radio can be programmed Over-The-Air			●	●	●	●	●
<b>RADIO DISABLE/ENABLE</b>	Radio can remotely disable and/or re-enable another radio			●			●	●
<b>REMOTE MONITOR</b>	Radio can remotely activate another radio's microphone			●			●	●
<b>REMOTE MOUNT CONTROL HEAD</b>	Control head can be located separately from radio				○	○	○	○
<b>TEXT MESSAGING</b>	Radio can send and/or receive text messages				●	●	●	●
<b>TEXT TO SPEECH</b>	Radio can read text and settings out loud				●	●	●	●
<b>THIRD PARTY APPLICATIONS</b>	Radio can use data to support third party applications				●	●	●	●
<b>TRANSMIT INTERRUPT</b>	Radio can force another radio to stop transmitting			○	●	●	●	●
<b>USER-SELECTABLE AUDIO PROFILES</b>	Radio's sound can be customized by user				●	●	●	●
<b>VOICE ANNOUNCEMENT</b>	Audible confirmation of selected operations of the radio	●	●	●	●	●	●	●
<b>DIRECT MODE</b>	Radio is capable of direct radio-to-radio operation	●	●	●	●	●	●	●
<b>CONVENTIONAL</b>	Radio is compatible with basic repeater system	●	●	●	●	●	●	●
<b>IP SITE CONNECT</b>	Radio is compatible with IP Site Connect system			○	●	●	●	●
<b>CAPACITY PLUS</b>	Radio is compatible with Capacity Plus systems			○	●	●	●	●
<b>LINKED CAPACITY PLUS</b>	Radio is compatible with Linked Capacity Plus systems			○	●	●	●	●
<b>CONNECT PLUS</b>	Radio is compatible with Connect Plus trunked systems				●	●	●	●

○ OPTIONAL (Extra Cost) ● STANDARD

# **BUSINESSES AROUND THE WORLD TRUST MOTOTRBO TO TRANSFORM THE WAY THEY WORK.**

Today, from the production line to the power line, MOTOTRBO radios are helping people work more efficiently, productively and safely. MOTOTRBO delivers the game-changing advantages of digital technology – from superb audio to expansive coverage – along with business-essential systems, applications and accessories that unleash the power of the radio.

MOTOTRBO puts the right device into the hands of the right user, to empower your workforce and transform your enterprise.

To do more with digital throughout your enterprise, visit  
[motorolasolutions.com/MOTOTRBO](http://motorolasolutions.com/MOTOTRBO)

Version 4, 06/15

Motorola Solutions, Inc. 1301 East Algonquin Road Schaumburg, Illinois 60196, U.S.A. 800-367-2346 [motorolasolutions.com](http://motorolasolutions.com)

MOTOROLA, MOTO, MOTOROLA SOLUTIONS and the Stylized M Logo are trademarks or registered trademarks of Motorola Trademark Holdings, LLC and are used under license. All other trademarks are the property of their respective owners. © 2015 Motorola Solutions, Inc. All rights reserved. RC-4-2036B

